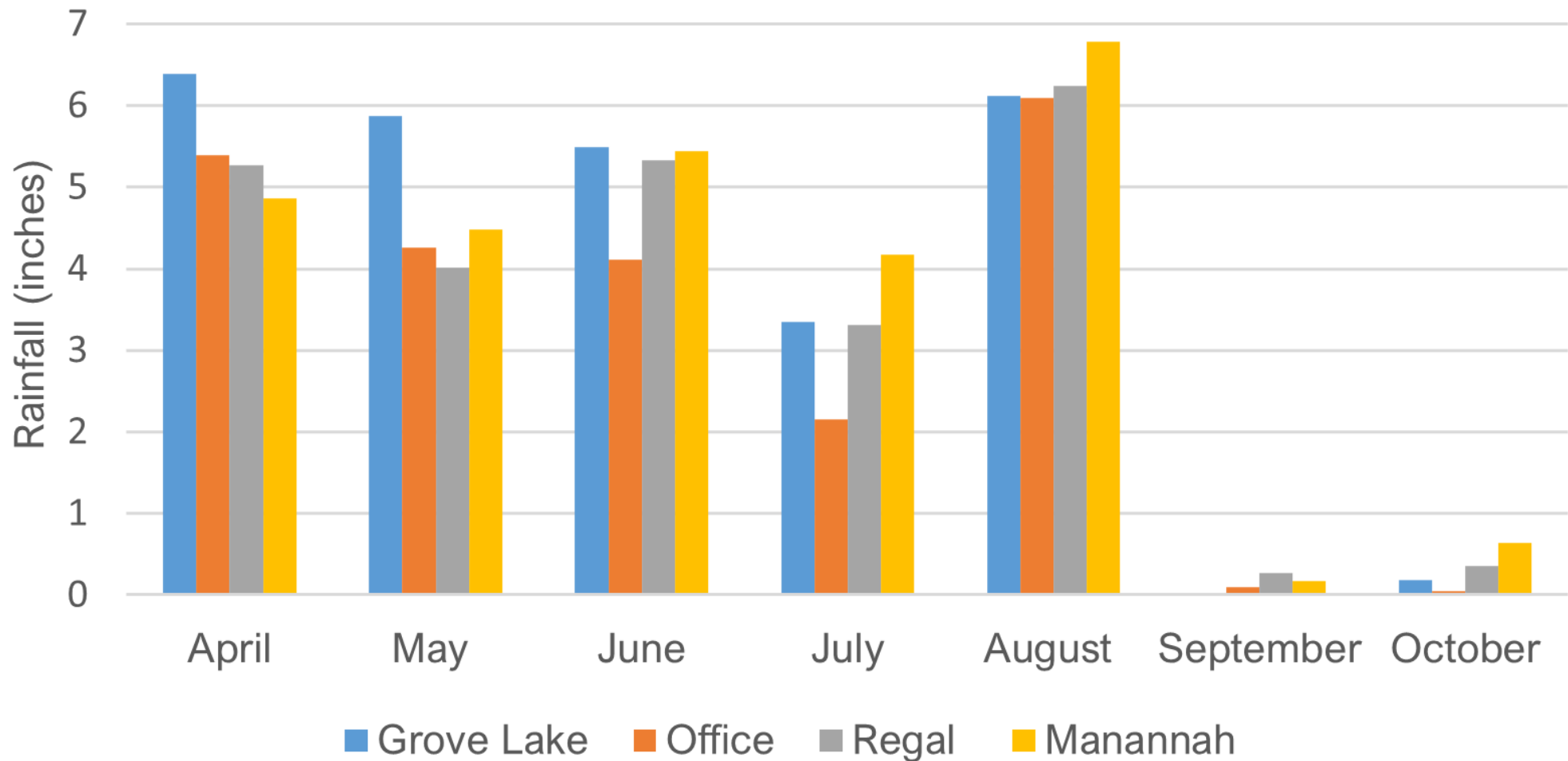


2024 MONITORING REVIEW

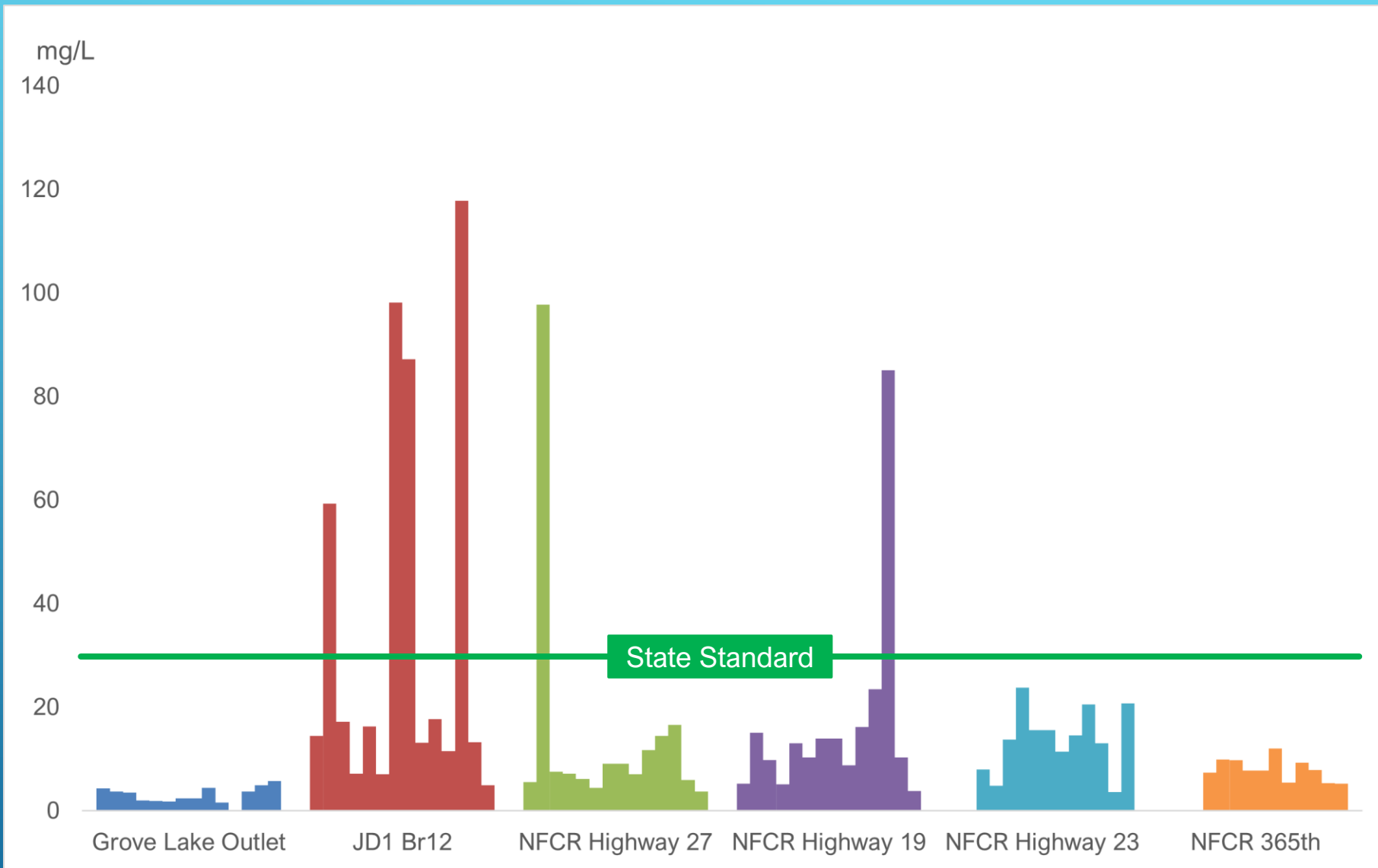
NFCRWD



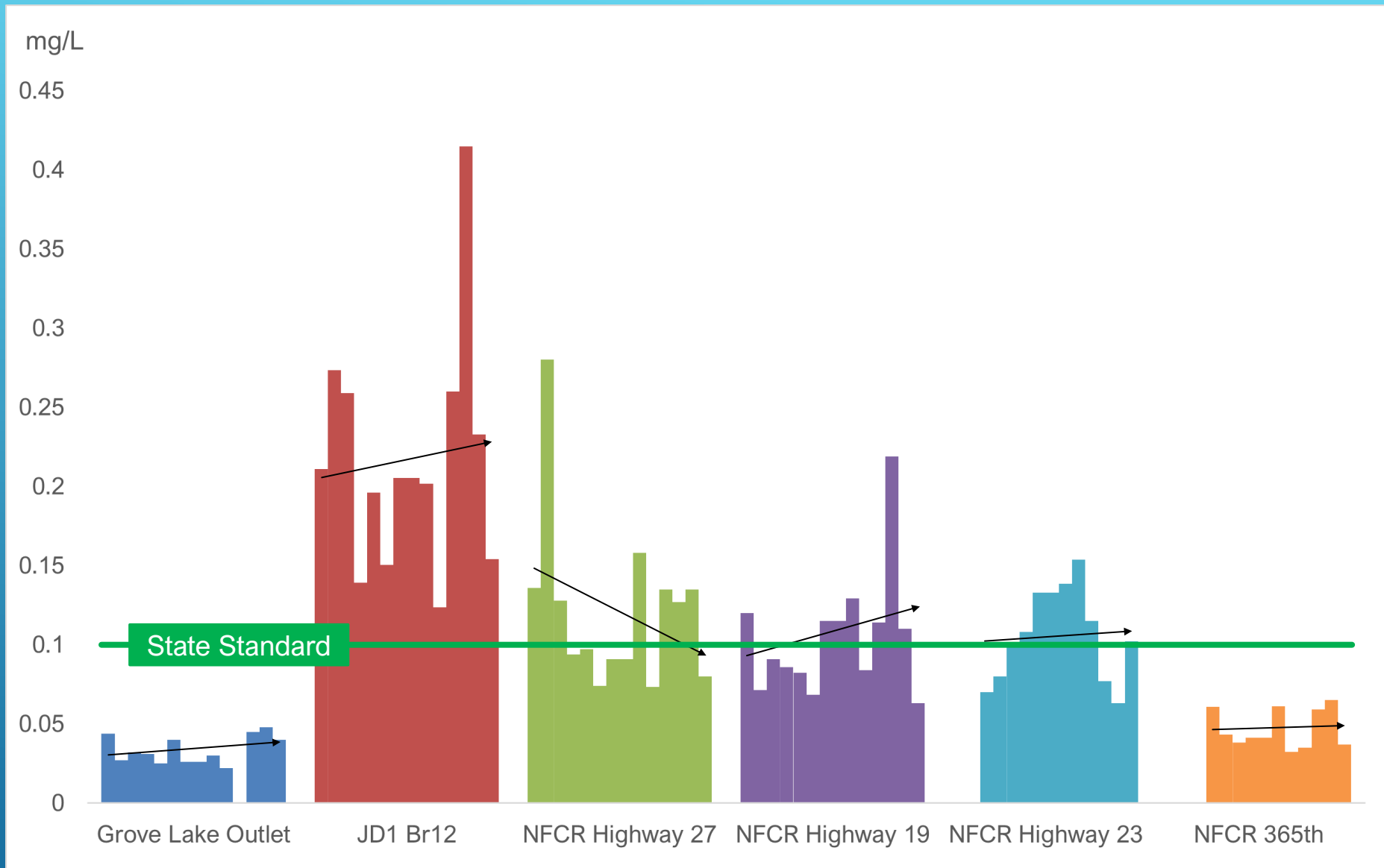
GROWING SEASON RAIN FALL MONTHLY TOTALS 2024

STREAM MONITORING

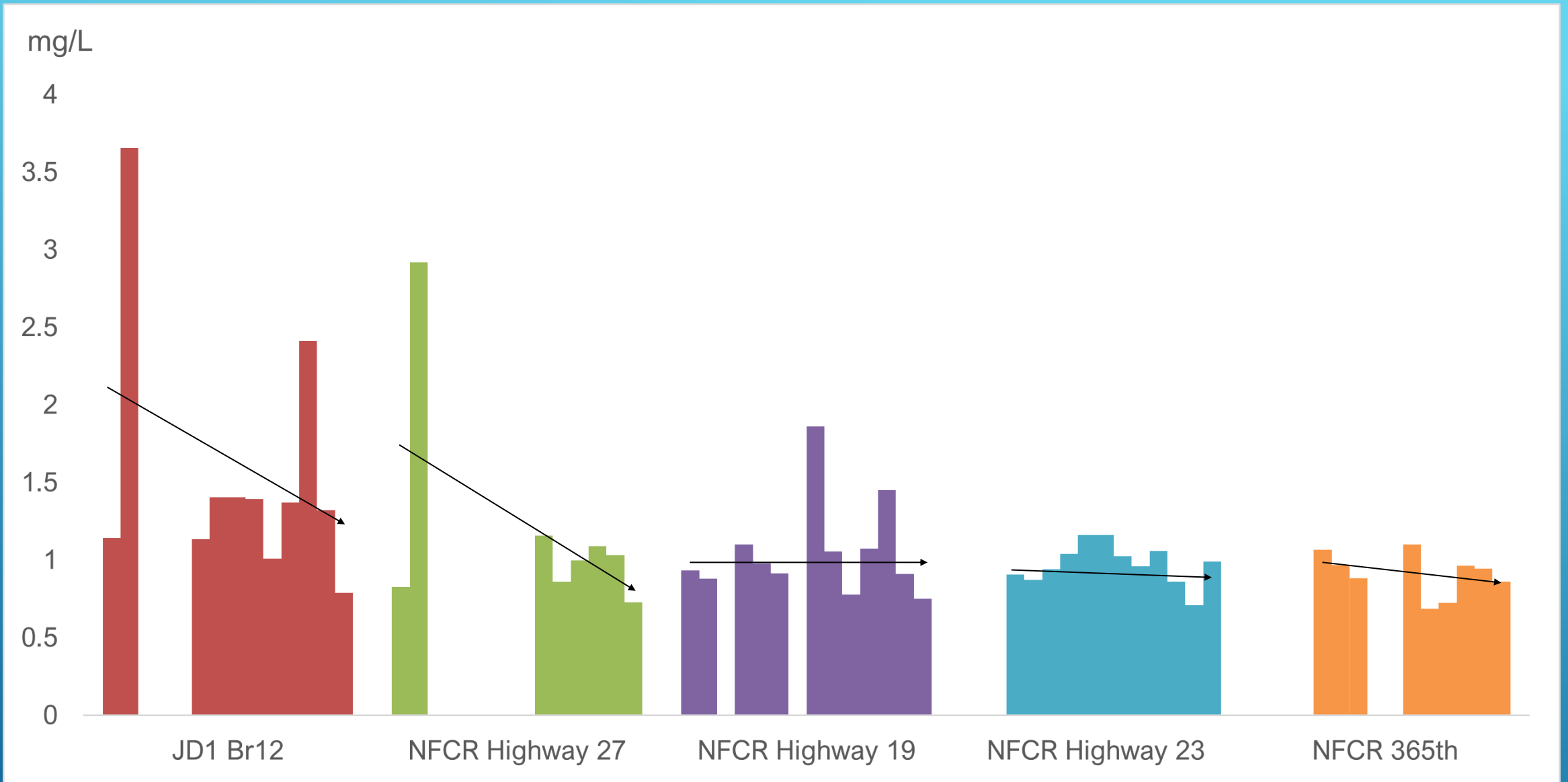




NFCRWD Total Suspended Solids (TSS) Averages 2011-2024

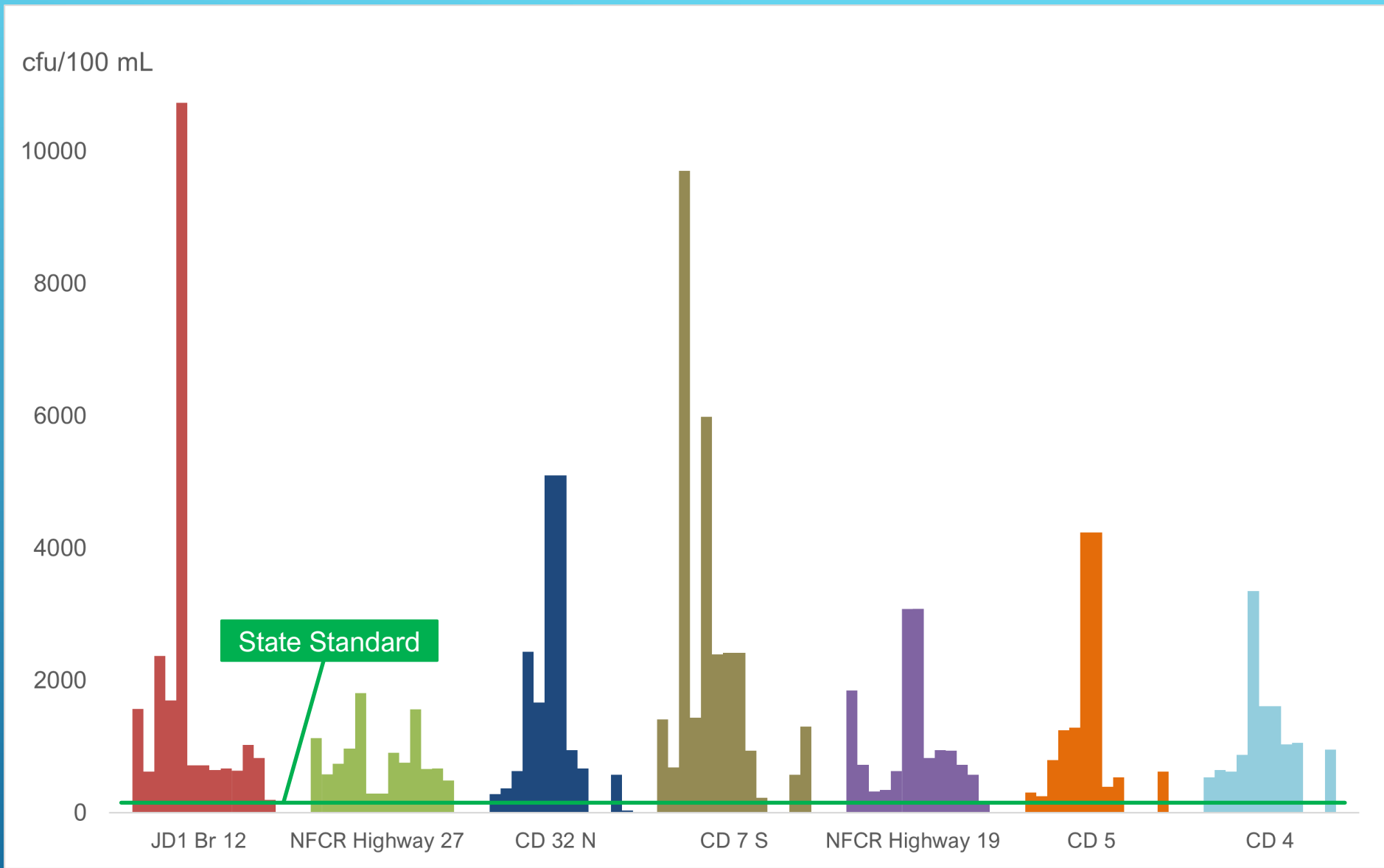


NCRWD Total Phosphorus (TP) Averages 2011-2024

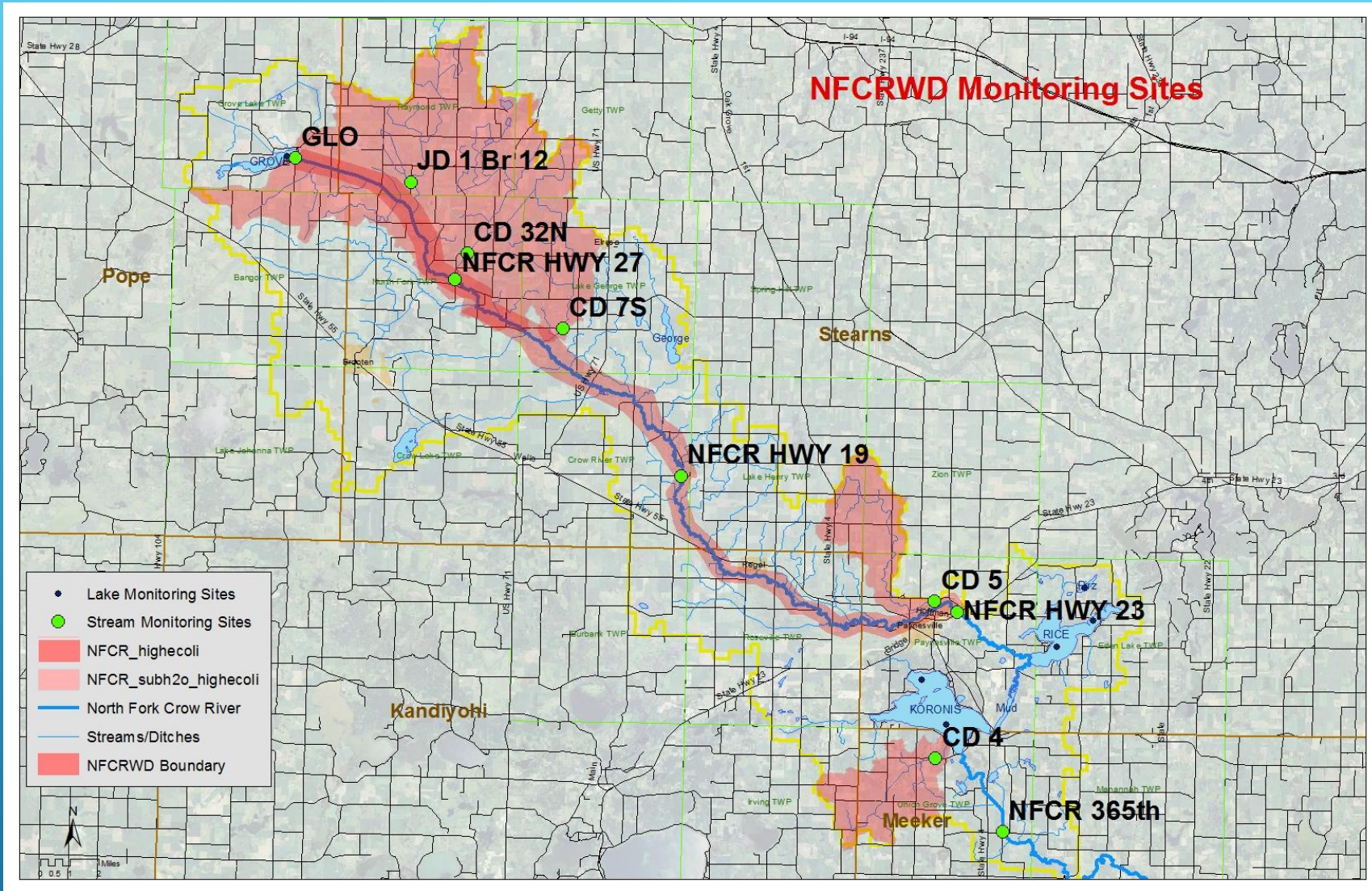


NCRWD Total Kjeldahl Nitrogen (TKN) Averages 2011-2024

TKN is the total concentration of organic nitrogen and ammonia.

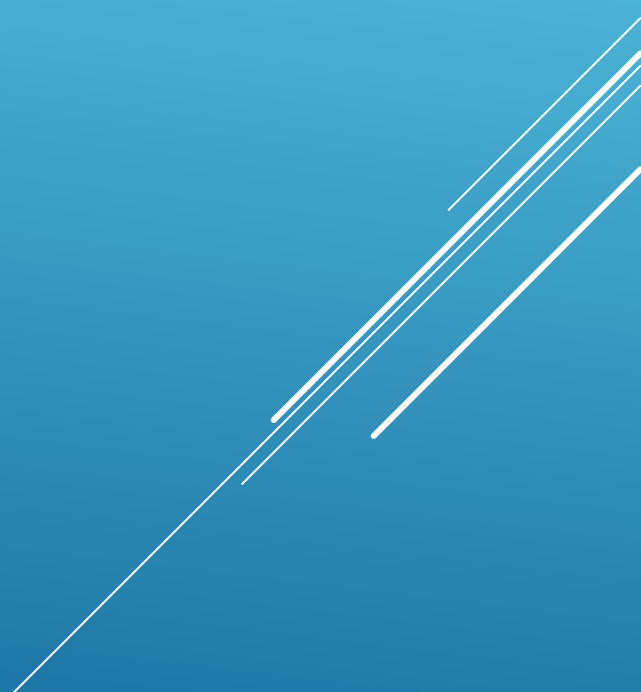


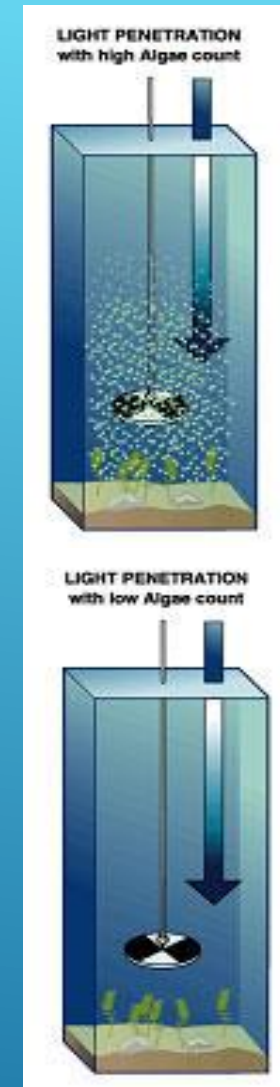
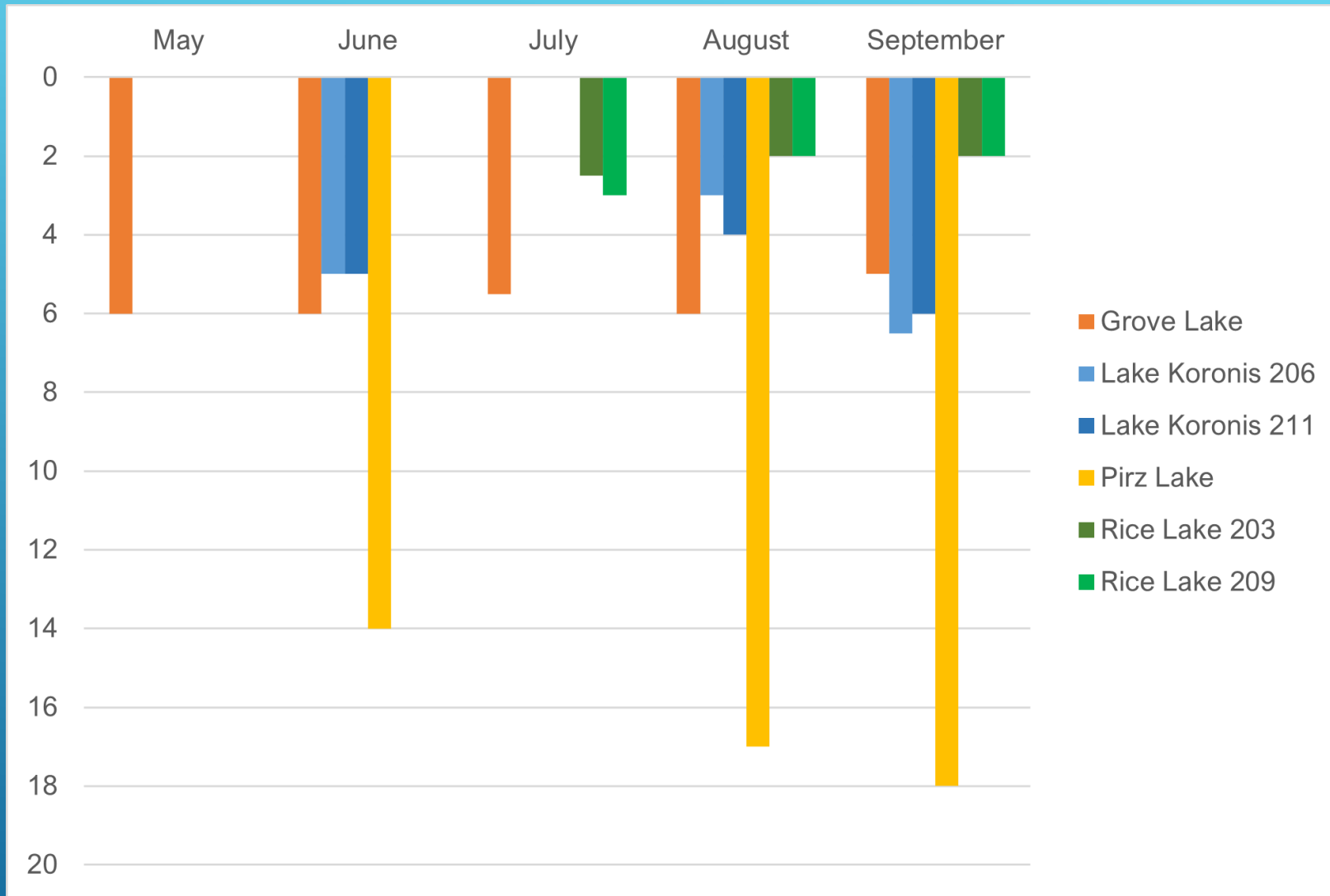
NCRWD E. coli Averages 2011-2024



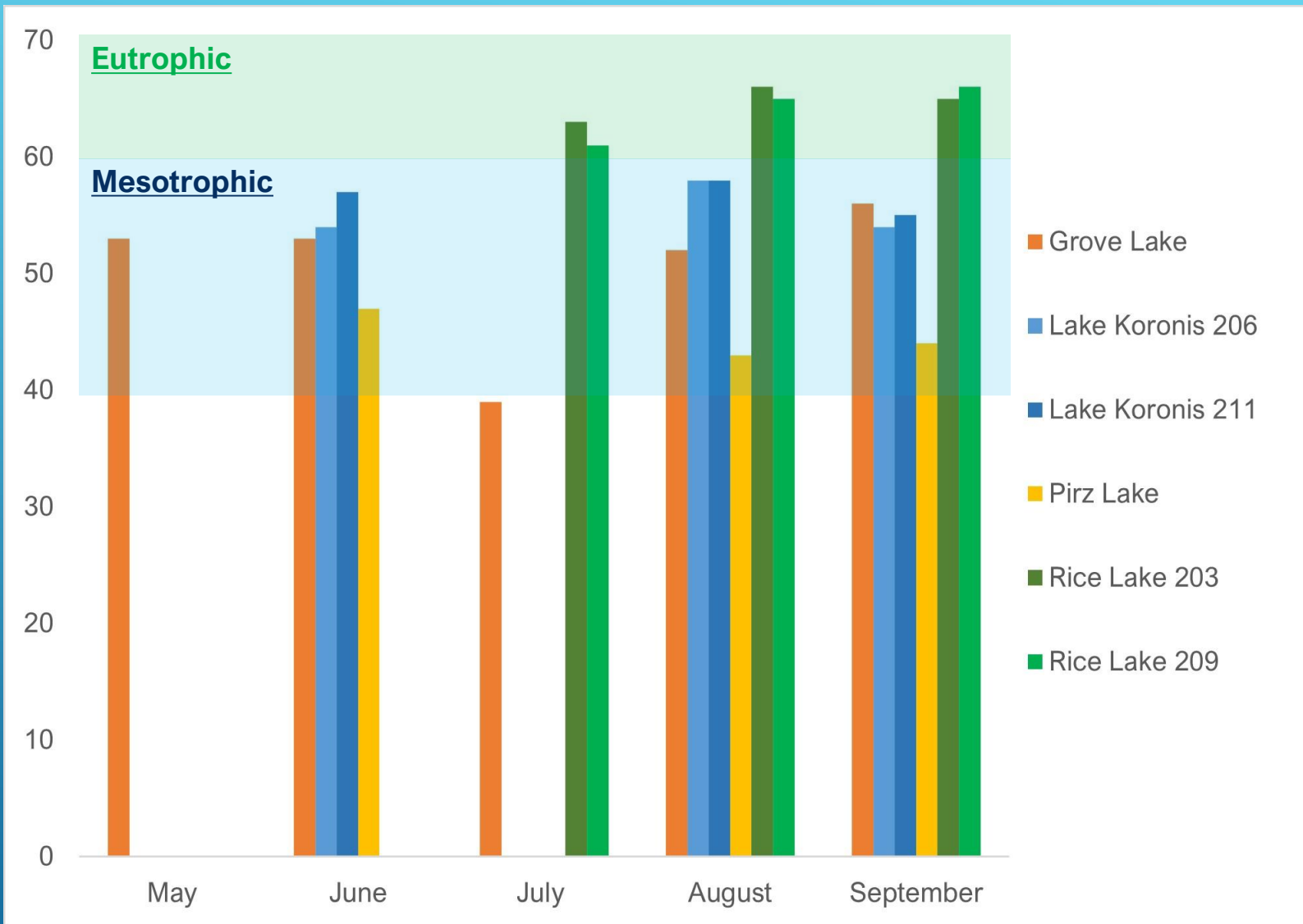
Added to the 2024 Impaired Waters list
 Rice Lake: Sulfate (affecting wild rice production)

LAKE MONITORING





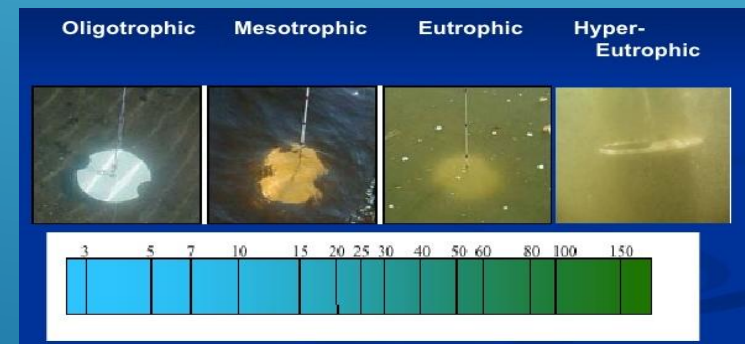
NFCRWD 2024 Secchi Readings (Water Clarity)



Carlson's Trophic Status (TSI), is a benchmark for lake water quality, by the Secchi disk, Chlorophyll 'a', and total phosphorus.

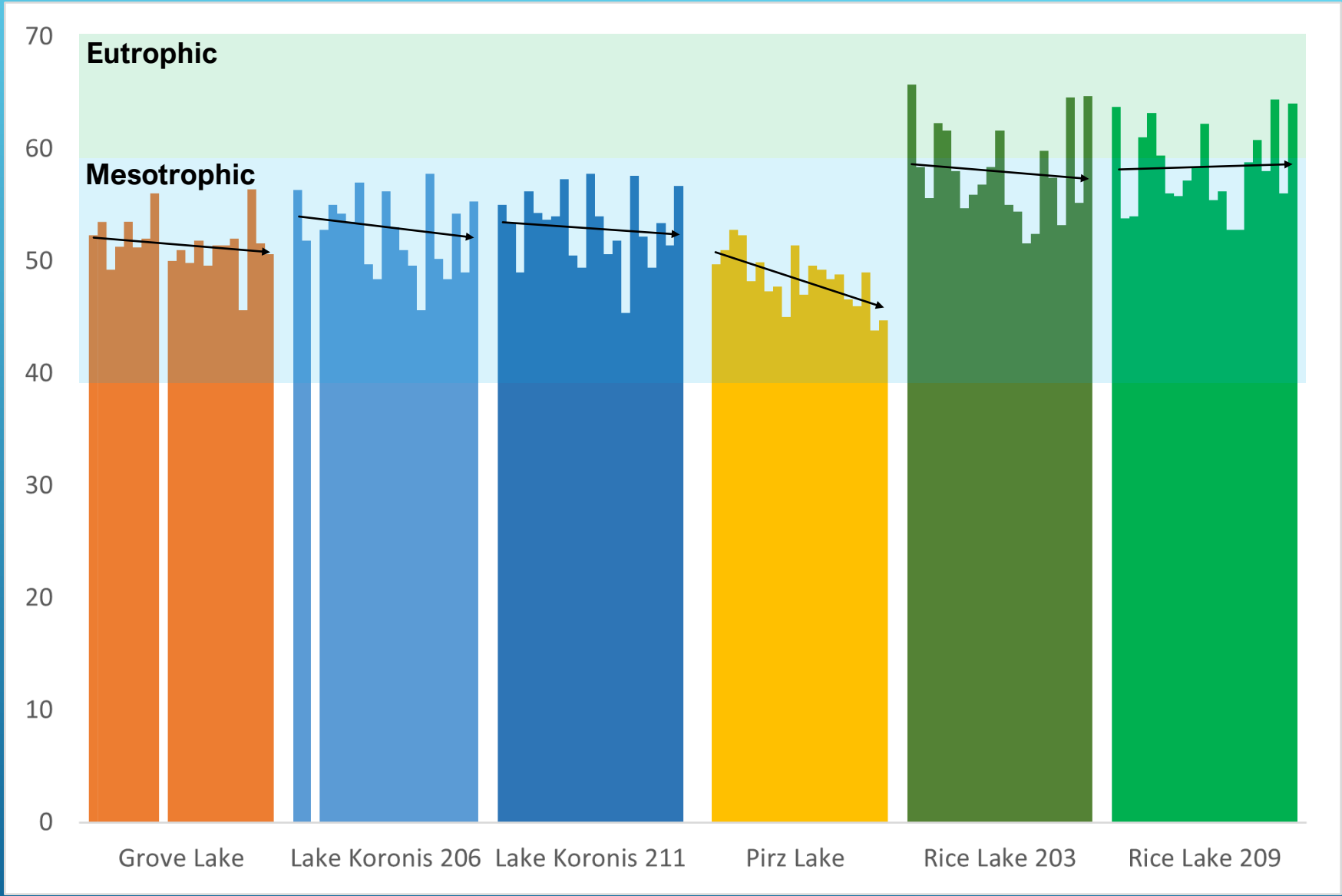
Eutrophic (TSI 61-80): Decreased transparency, lack of oxygen in the lower levels during the summer, weed problems evident, warm-water fisheries only.

Mesotrophic (TSI 41-60): Water moderately clear; some probability of no oxygen in the lowest levels during summer.



NFCRWD 2024 Trophic State Index (TSI)

TSI AVERAGE (2004-2024)



QUESTIONS?

