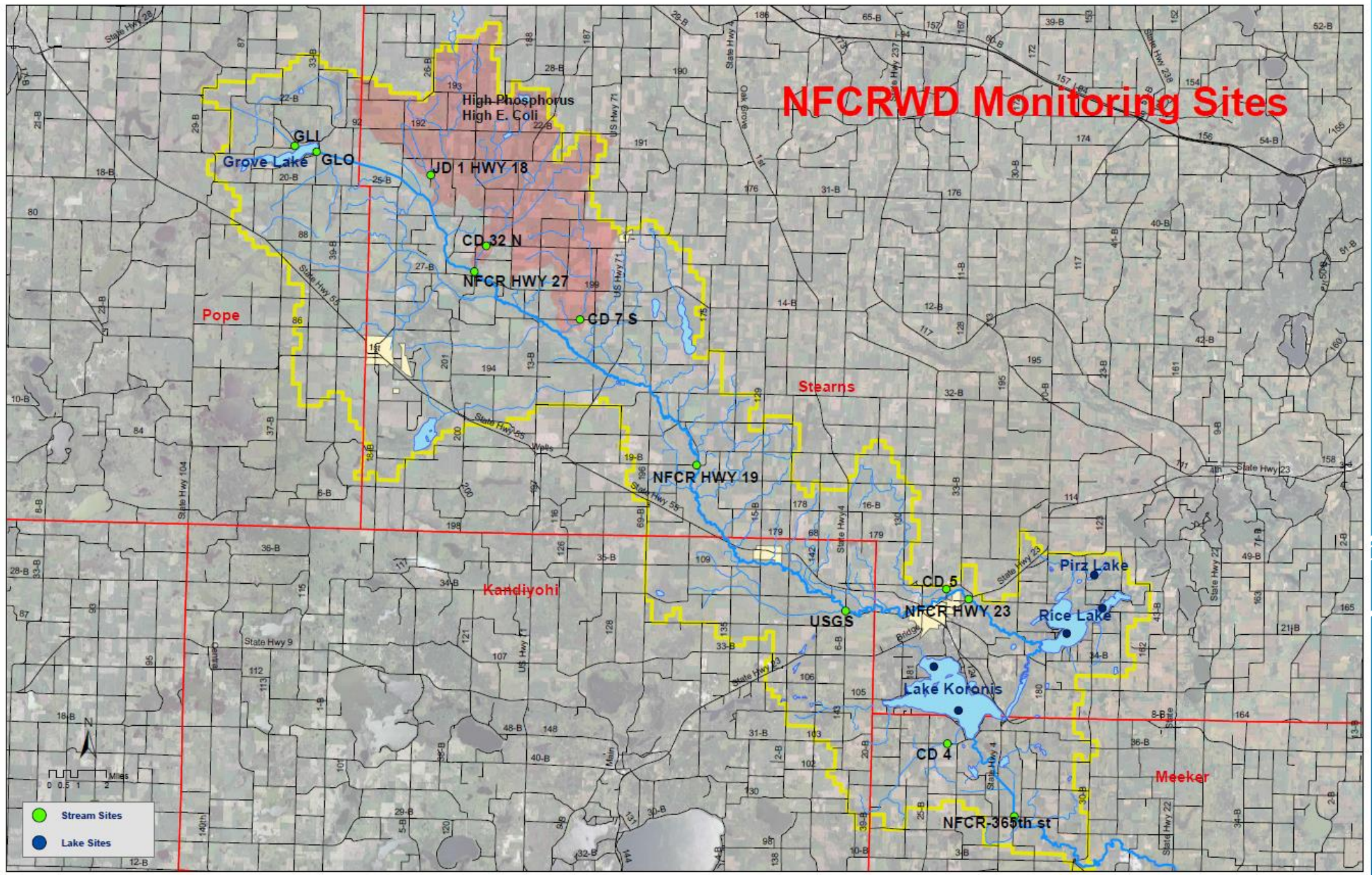


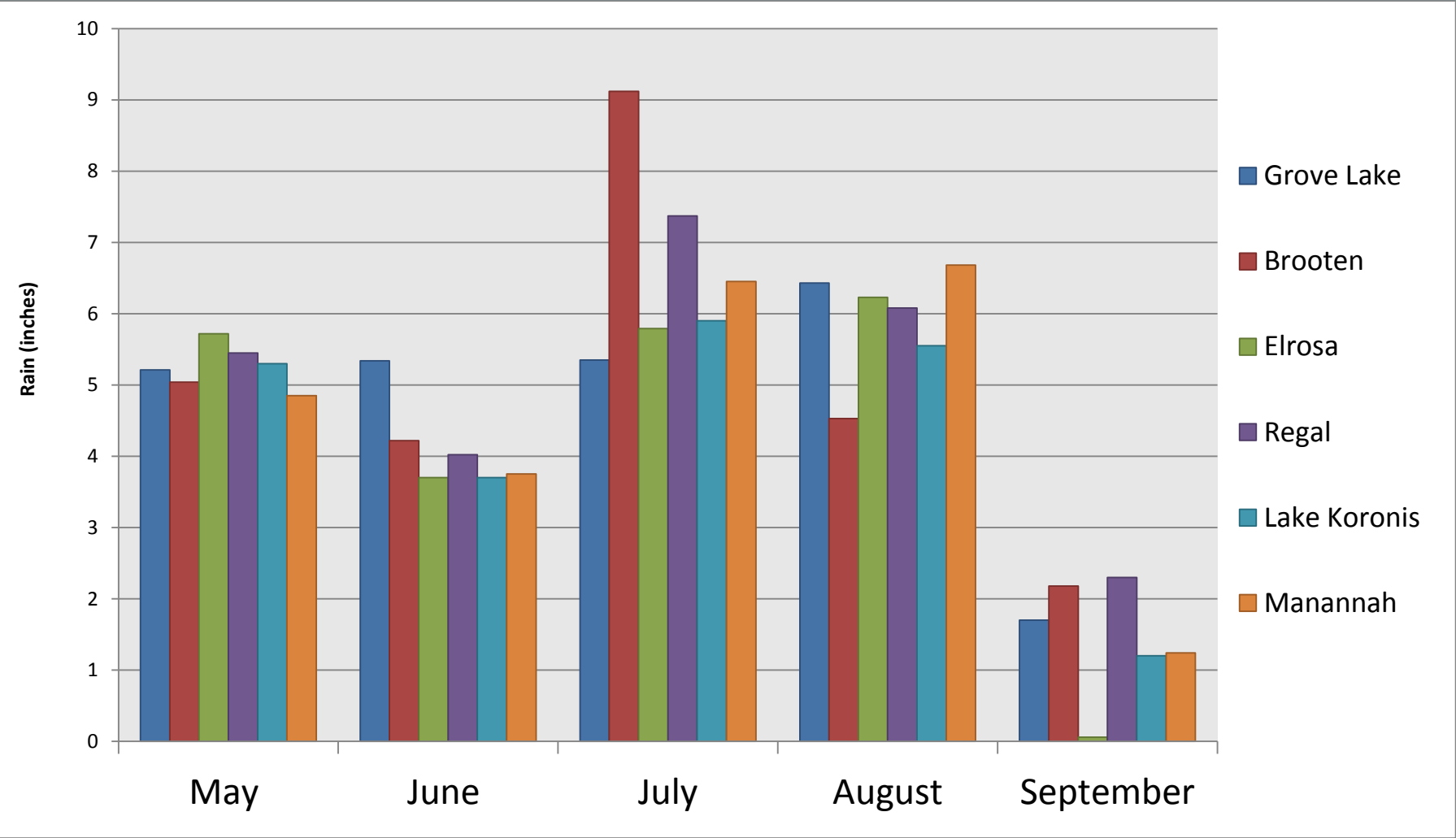
# 2015 MONITORING REVIEW

NFCRWD

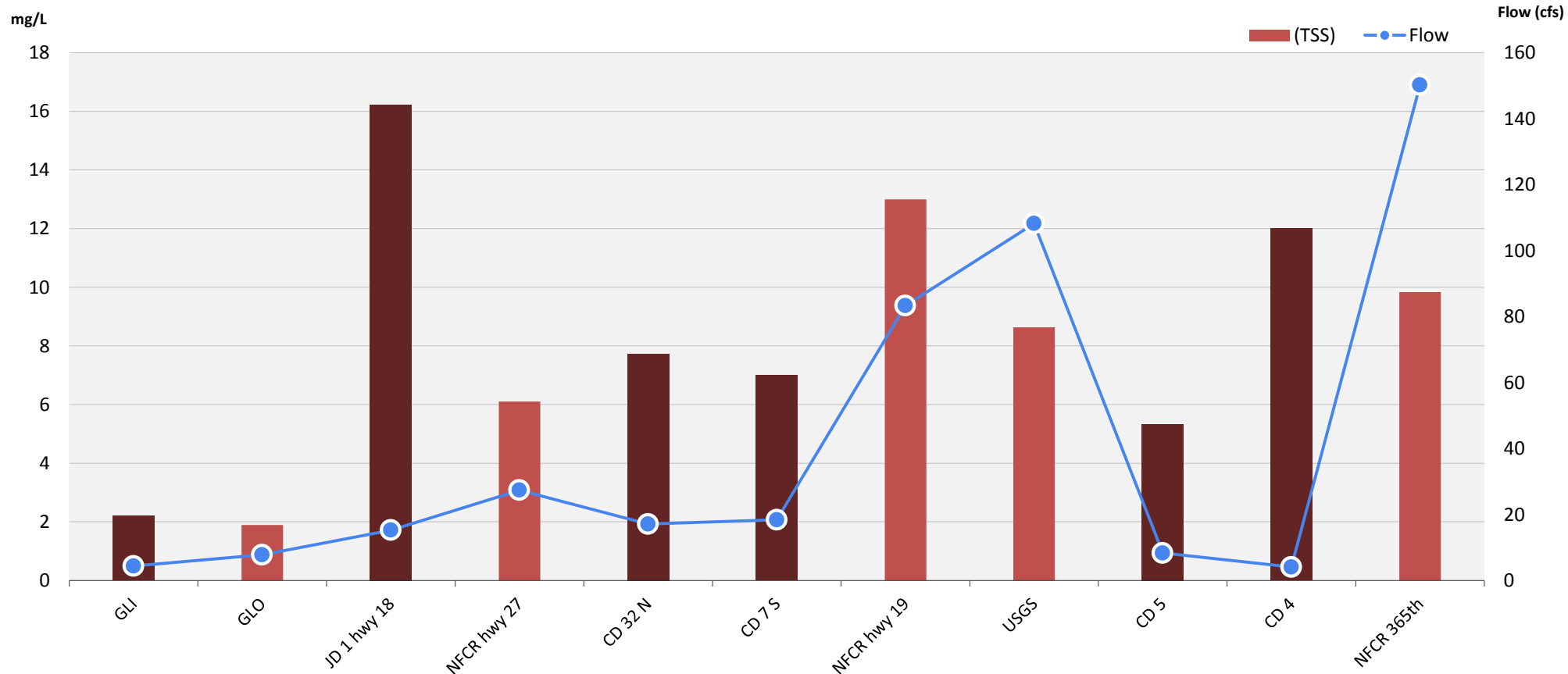
# NFCRWD Monitoring Sites



# GROWING SEASON RAIN FALL MONTHLY TOTALS 2015

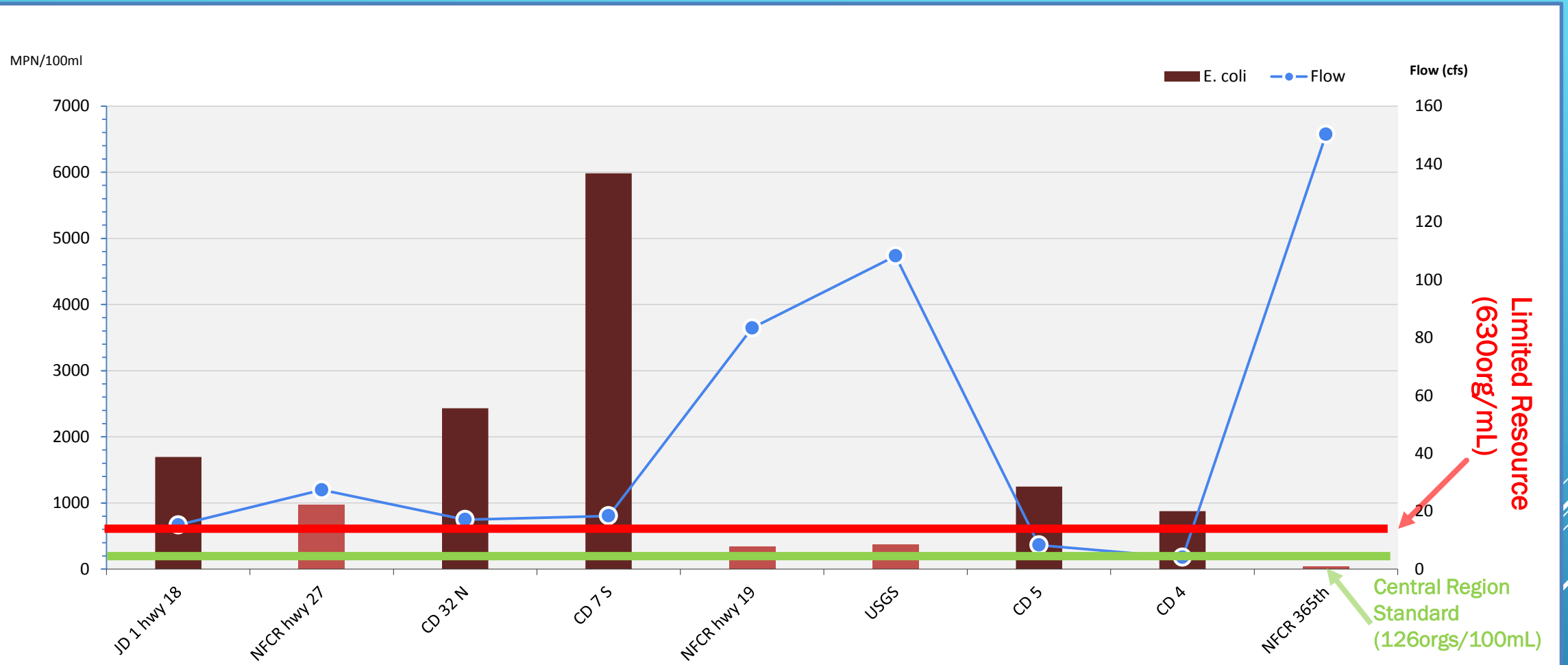


# NFCRWD 2015 MONITORING SITES (TSS)



Central River  
Nutrient  
Region  
30 mg/L

# NFCRWD 2015 MONITORING SITES (E. COLI)

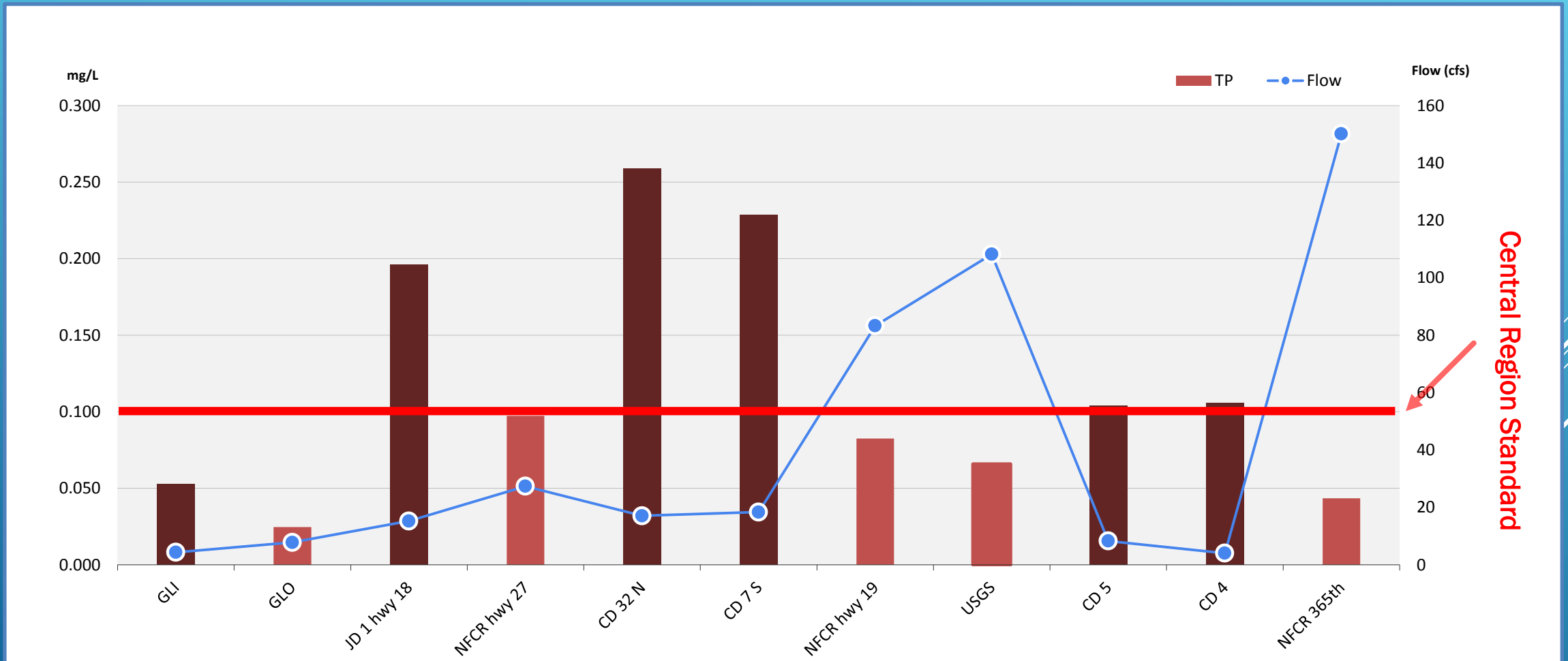


17%	20%	20%	30%	17%	8%	25%	30%	0%
-----	-----	-----	-----	-----	----	-----	-----	----

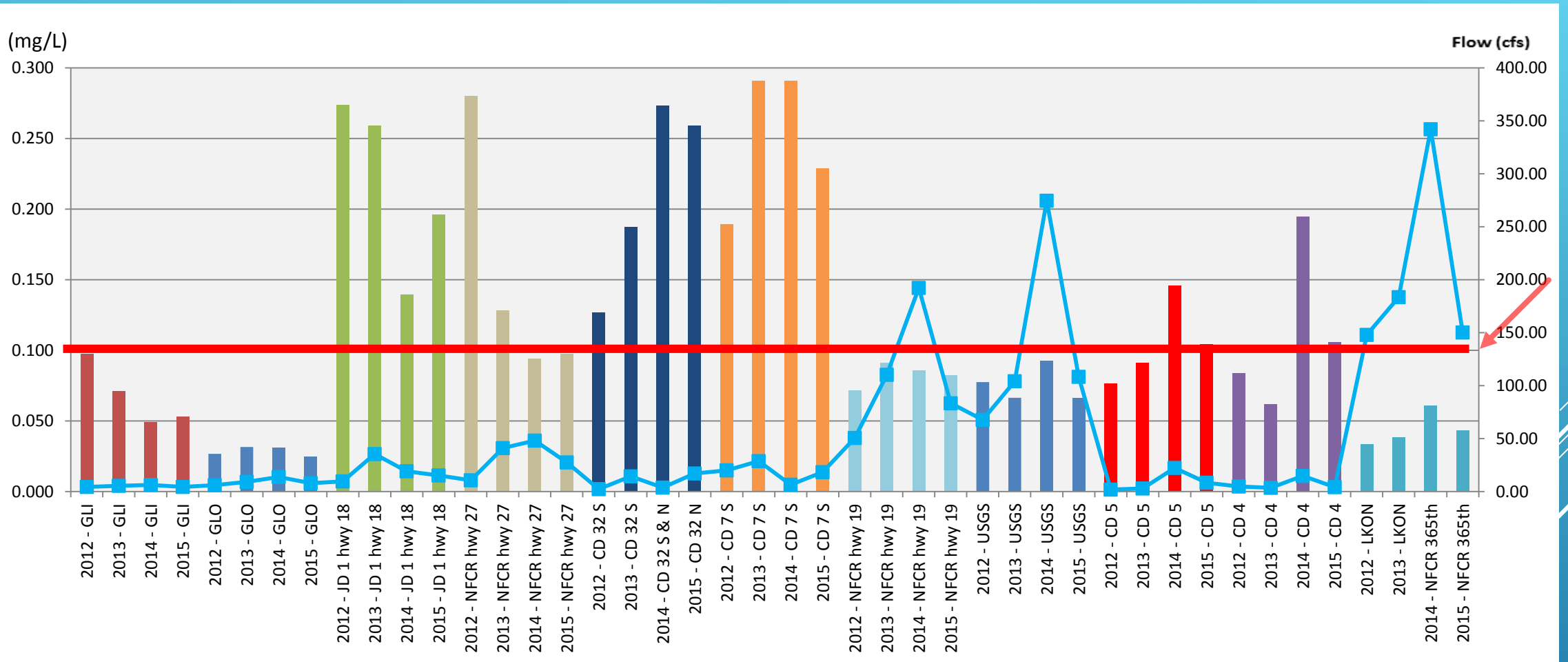
Percent of 2015 Samples over 1260 MPN/100mL

State Limits : No more that ten percent of samples per calendar month can individually exceed 1260 MPN/100mL

# NFCRWD 2015 MONITORING SITES (TOTAL PHOSPHORUS)



# TOTAL PHOSPHORUS AVERAGES 2012-2015



Central Region Standard

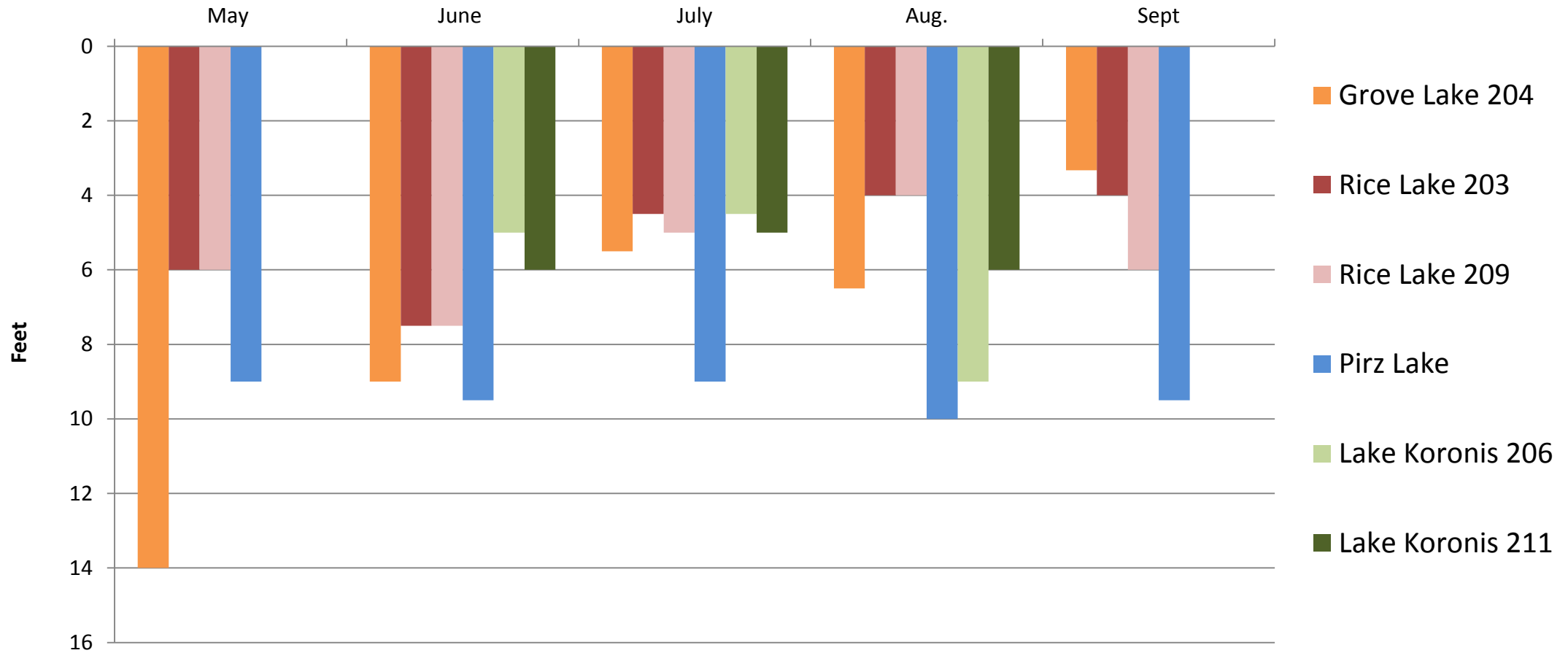
NFCRWD Rain Totals								
	April	May	June	July	August	September	October	Total
2012	3.62	5.39	3.55	1.93	2.17	0.33	0.71	<b>17.70</b>
2013	1.96	2.9	5.1	1.75	0.6	2.68	4.32	<b>19.31</b>
2014	3.86	2.25	10.71	0.72	4.96	2.13	0.97	<b>25.60</b>
2015	1.35	5.04	4.22	9.12	4.53	2.18	0.69	<b>27.13</b>

# WOODCHIP BIOREACTOR 2015 MONITORING RESULTS

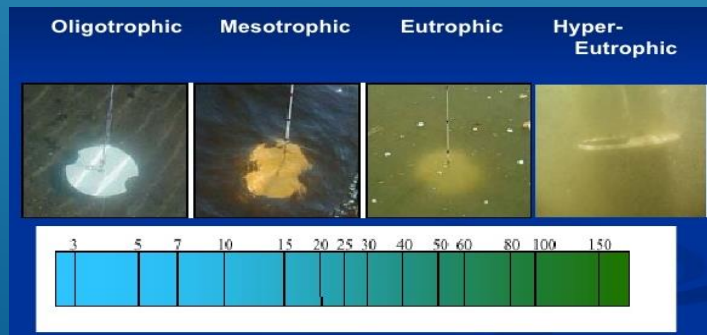
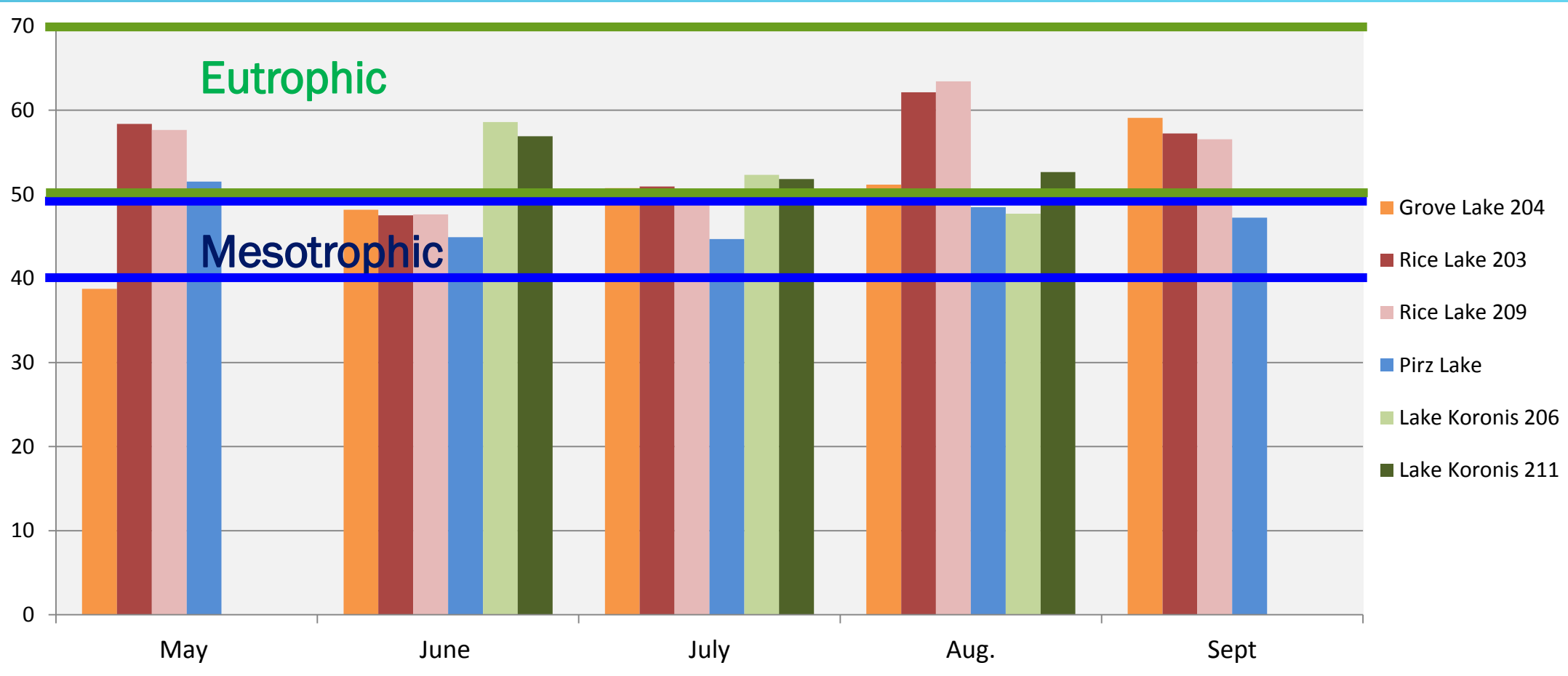
		mg/l	mg/l	mg/l	mg/l	MPN/100ml	mg/l
		TP	OP	TKN	(TSS)	E. coli	N+N
WC Bio In	5/19/2015	0.050	0.052	<0.3	7	<10	24.2
	Out	0.011	0.004	<0.3	1	<10	28.6
WC Bio In	5/26/2015	0.061	0.053	<0.3	36	<10	30.5
	Out	0.009	0.011	<0.3	<1	<10	29.4
WC Bio In	6/12/2014	0.286	0.058	1.920	94	60.9	36.5
	Out	0.026	0.024	0.717	<1	9.7	33.8
WC Bio In	7/2/2014	0.060	0.062	0.462	2	21.3	34.8
	Out	0.046	0.039	0.520	<1	2.0	27.4



# 2015 NFCRWD SECCHI READINGS



# 2015 NFCRWD TROPHIC STATE INDEX (TSI)



# TSI AVERAGE (2012-2015)

